



Newsletter

SEPTEMBER / OCTOBER 2011

PO Box 343
Gisborne, Vic, 3437

www.gisbornedarc.com.au

President

Lucy Nicholson
0415 696 923
ln_ccuk@yahoo.co.uk

Secretary

Karen Middlebrook
0430 993 040
Karen.Middlebrook@ato.gov.au

Assistant Secretary

Marion Copping

(and website administrator)

Treasurer

Tammy Georgaloudis
0418 350 747
christam0@bigpond.com
(Uniforms)

Assistant Treasurer

Michelle Coxall

AGM TO BE HELD ON OCTOBER 21ST

VENUE TO BE DECIDED, SO WATCH YOUR EMAILS FOR THIS INFORMATION!!!!!!!!!!

Membership for the new year MUST BE PAID & CARD MUST BE STAMPED prior to November 1st 2011.

So bring your money, forms & Membership card to the AGM
If you wish to compete or ride at the November Rally!!!!

TTT Dressage Nov 5 & 6 at Werribee Park.

We have two teams entered so far and a third team entering.

Team one is Martini's & Mojito's

Karen Middlebrook

Sarah Bridge

Bianca Truda

Anna Short

Team Two is Up the Jacobs Creek with a STRAW

Kristie Bloem

Nicole Downes

Megan Clements

Brendam McOwn

Team Three is needing a fourth rider PLEASE!!!!!!!!!!

Gillian Leach

Tacy Lee

Michelle Nichols

FOURTH RIDER NEEDED URGENTLY

General committee

Mandy Charman
mandycharman@gmail.com
(Librarian)

Gillian Leach
gleach@wchs.org.au

Evelyn Crawford
0414 794 144
evelyn@crawfords.net.au

Eloise McKenzie
0414 012 884
elle@crawfords.net.au
(Rally co-coordinator)

Amanda Edwards
5428 3552
aledwards@hotmail.com

Other contacts

Melissa Harper
Phone 0354 335 295
sandmharper@activ8.net.au
(Newsletter)
(TTT co-coordinator)

RALLIES

Please see attached **NEW** Rally Booking form with details on all rally bookings.

Listed below are the upcoming Rallies, - **First in basis, SO GET YOUR BOOKINGS TO ELLE EARLY!!!!!!!!!!!!!!!!!!!!!!!!!!!!!!**

OCTOBER CLINIC OCTOBER 1ST 2011

You all voted for extra clinics, so please try to support them!!!!

Robbie Allen Showjumping
Amber Smeenk - Dressage

October Rally - October 8th - Club Grounds Day prior to Showjumping Competition - so please allow extra time for Set up for the next day!!!

Dressage - Kylie Burton
Jumping - Chris Mann
Cross Country - Chris Mann

Dressage Test Runs Day at Club grounds

October 22nd - See Elles flyer, or contact Elle for further information

CLINICS/ LESSONS @ PARKLANDS Please book directly with Sally Macaulay for the Clinics below

Sept 23rd (Elsa)

Oct 10th (Manu)

Nov 11th (Manu)

ALAN MITCHELL CLINICS FOR 2011/2012

Allans fees have gone up to \$35.00 per rider for 2011.

December 16th 2011

2012 Price to be advised for 2012

January 27th 2012

March 9th 2012

April 20th 2012

June 8th 2012

August 17th 2012

October 12th 2012

Upcoming rallies

If you would like to see a particular instructor at one of our club rallies, please contact either Elle McKenzie or another committee member with your suggestion.

UNIFORMS

Club Uniforms are available for purchase and we have a large variety of styles for sale. Please look on our website (www.gisbornedarc.com.au) and contact Tammy regarding purchases. Its time to order more stock and the savings are great if we all order together, so please work out what you want and get your orders to Tammy ASAP

COMMITTEE MEETING- - MONDAY OCTOBER 10TH 7.30 P.M.

Next meeting is Monday October 10th @ Amanda Edward's House 10 Benson Road Gisborne South 7.30 p.m. start.

All full members are welcome to attend and take part in our friendly, social meetings. Please bring a plate or even better, a bottle of wine.

WANTED - HORSE FOR LEASE/LOAN

John Leach would like to know if anyone has a horse that they would like to lease or Loan him to ride whilst his horse is away in South Australia!!!!

Poor John has "Rider Withdrawal Symptoms" so really wants something to ride & possibly compete on!!

16.1hh plus, level of education unimportant.

John Leach

0411247158

Email John Leach [john.leach@me.com]

DON'T FORGET - WE HAVE A NEW BANK ACCOUNT - WITH Bendigo Bank- All Rally Payments are to be paid into this new account please!!!

Bendigo Bank

BSB 633 000

Account Number 142740166

HRC AV OFFICAL EVENT RESULTS

Results will only be counted if they are published in the newsletter and Karen Middlebrook is emailed the results. Gisborne uniforms only & all details go towards horse of the year results. Results from the period 1 September to 31 August.

Please ensure that all results sent for publishing in the newsletter contain your name, horse name, event, date of event, level and your results. Your results cannot be published without all this information.

Karen Middlebrook & My Haven Windancer

Bulla Dressage September 10

Test 3D - 1st

Test 3F – 1st

Jackpot Champion

Sunbury HRC AV Show

SOP Level 3 – 3rd

Ridden Mount Level 3 – 1st

Open ridden Mount 13-13.2hh 1st

Champion Open Ridden Pony

Kristie Bloem & Mystic Affair

Sunbury HRC AV Show

Mount Most Suitable – 2nd

Open Novice ridden Mount 1st

Open ridden Mount 13.2- 14hh 3rd

Ridden Showhunter Pony 4th

Elle McKenzie & Miss Holly Golightly

Beaufort ARC Offical Showjumping day

AM7 1st

Top Score 1st

Two Phase 1st

Level 4 Highpoint Winner

Brendan McOwn & Ricardo

Bulla Dressage September 10

Level 4

3rd & 4th (not sure which test was which)

Brendan McOwn & Mellizo

Bullengarook Extravaganza

CT level 4 – 4th

Level 4 Showjumping 1st & 3rd

Nicole Downes & Alegaria Asombroso

Bullengarook Extravaganza

2nd & 3rd level 2 Dressage

Reserve Champion Jackpot

Nicole Downes & AEA Just Dance

Bulla Dressage September 10

Test 2d - 4th

Test 2F – 1st

Jackpot Reserve Champion

Nicole Downes & Mellizo

Melton Horse Trials – Level 3 4th

TTT Horse Trials – Level 3 6th

The grounds are booked on the following days of each month.

Regular Uses groups at the Club Grounds

Gisborne Pony Club.. 1 st **Sunday** of the month.

Gisborne Adult Riders.. 2 nd **Saturday** of the month

Simply Savy.. Natural Horsemanship 3 rd **Saturday** of the Month .

Braemar College Equestrian Club Every 2 nd **Wednesday** p.m approx 4.00 pm till dark.

FOR SALE !!!!!!!!!!!!!!!!!!!!!!!

Cob (Riding pony) snaffle bridle - Oz Nut - suitable for a chestnut small galloway.

Made by David Quayle saddlery and was made to measure for Rossi.

Raised cavesson noseband, plaited reins, neck number hold and hanoverian noseband.

In excellent condition and has won SOP at Summer Royal & Barastoc.

\$550 (will sell items seperately if required)

Contact: Karen Middlebrook 0430 993 040

Kiefer Lech professional Dressage Saddle- 2007 model, used sparingly- Excellent condition,

Brown, long points, medium gullet, unmounted \$2400.00 ONO

Boa Horse Boots - for Barefoot Horses - Size 3 Still in box with all manuals. Used in stable on injury for one week only so brand new. Price \$ 180.00 ONO

Brand New Refridgerator- Oracle, all glass shelves, with two crisper/vegie compartments, no freezer, used only for a month, then stored. New condition.

\$350.00 ONO.

Can email photos of any of the above, prices are negotiable, **contact Melissa Harper**

On ph 0354 335 295 or email sandmharper@activ8.net.au

FOR SALE - CONTACT KAREN HUNT

All in lovely condition as hardly worn!

Embroidered saddle blanket in club colours (full size)– quality wool - \$40

Woollen saddle blanket in club colours, no club logo – suit pony/galloway

– never been on a horse - \$35-

(both saddle blankets made in Shepparton)

Club Jumper – size 12 only worn once - \$45

Club jacket – size S - \$55

Phone Karen on 0408 135 243 & evenings 5427 3477



Gemz DRIVING SCHOOL
0413 417 891
www.gemzdrivingschool.biz

L P

Automatic driving lessons and license testing
'Keys2Drive' accredited female instructor
Flexible appointment times
Servicing the Macedon Ranges and surrounding areas

Lucerne Hay & Chaff for sale

Grown in Kerang. We can deliver to Gisborne.

20kg bag \$14.00 with feed test.

Large square bales - \$60 each. Approx 20 small squares in on big square. If you convert it to small squares it is about \$3.00 per bale.

Contact Ron (email preferred) ropie@westnet.com.au or 0458 181 820.

Professional Hoof Care and Advice

Boot Fitting and Information

Attended Diploma Australian
College Equine Podiotherapy

Laura Smith
0400 880 276
epbarefoot@live.com



RUG REPAIRS

Quality Rug Repairs at Competitive Rates

24 Hour service with Emergency repairs

Done while you wait

High pressure cleaning of heavy canvas & under rugs, deodorised and or reproofing
if required



Phone Sally Macaulay on

(03) 5428 2516

Better Life

FITNESS & WEIGHT LOSS

*Come along to our Riders Bootcamp held at the club grounds at 8am every Saturday. Only \$10 a session!

*Includes exercises to improve your overall fitness and strength, as well as specific exercises to build your core strength, balance and riding ability. Fun and friendly environment. Fitness beginners more than welcome.

*Private or small group training also available- focusing on weight loss, fitness, riding or just everything!

* Highly qualified personal trainer, strength and conditioning coach- Phone Kristie on 0407 815 401 or email betterlifefitness@live.com

High Quality Hay for Sale

Pasture hay - \$12

Lucerne hay - \$13



All hay grown on irrigation in Mt Gambier, SA.

Shedded since baled, weed free and no weather damage.

Contact Nicole Downes on 0419 219 054 or nicole_downes@tresscox.com.au

COMPARE HOME LOANS AND SAVE !!

WE WILL DONATE \$150 TO GDARC FOR EVERY SETTLED LOAN!!



Look out for our similar ad in chaff chat- Crawford Mortgage Services, owned and operated by Evelyn Crawford and employing Elle McKenzie of GDARC are award winning mortgage brokers who can help you compare and get more from your home or investment loan.

- Choose from a panel of over 20 lenders to make sure you get the best deal
- Difficult / Complex loans a specialty
- No financials - OK. Lo doc loans available
- Owner-Builders, Land, Rural and Commercial
- Bad credit / Defaults - OK
- Reverse Mortgages and lending to Self-Managed Super Funds

We come to you, or our offices are located at
142 McKenzie St, Melton or 112 McGeorge Rd, Gisborne South.

Phone Evelyn or Elle on Freecall **1800-010-573**

www.crawfords.net.au

S
P
O
N
S
O
R
S
E
D
S

SPONSORS

Skye Park Rugs

www.skyeparkrugs.com.au

Fred's Fodder

7 Ladd Road

New Gisborne

Ph: 03 5428 3008

Parklands Agistment & Rug Repairs

125 Gisborne-Kilmore Rd, Gisborne

Ph: 03 5428 2516

Mal Byrne Saddlery

National equestrian centre, Werribee

Ph: 03 9974 2344

One Stop Embroidery

103 Evans Street

Sunbury Vic 3429

Ph: 03 9744 1113

Natika Gough

Bowen Therapist

Equerry Horse Services

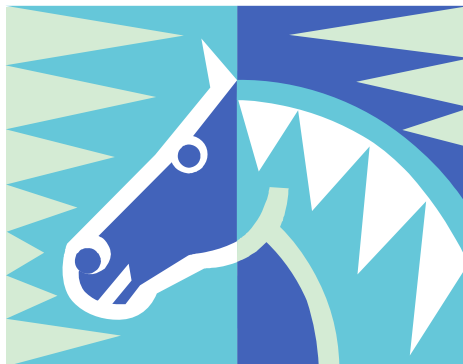
03 9894 1315

0409 967 476

natika@equerryhorseservices.com

Hygain feeds

www.hygain.com.au



C
L
A
S
S
I
F
I
E
D
S

C
L
A
S
S
I
F
I
E
D
S
